

郴州功田电子陶瓷技术有限公司

CHENZHOU GONTCERA CERAMIC TECHNOLOGY CO., Ltd

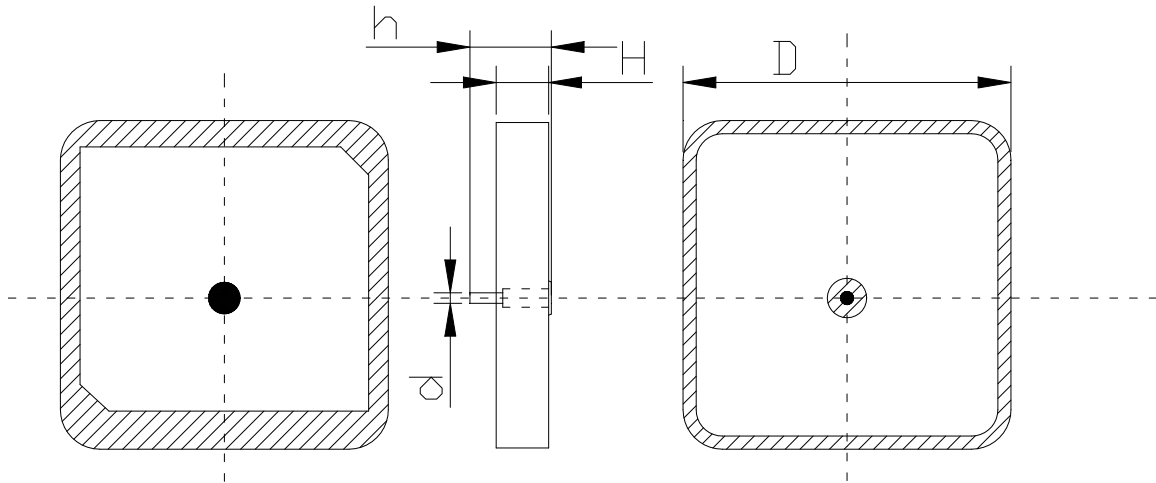
1 Performance Index

Frequency	1575.42MHz \pm 5MHz
Impedance	45 Ω \pm 5 Ω
Polarization Mode	Right-Handed Circular Polarization
Axial Ratio	\leq 3dB
SWR	\leq 1.5

2 Structural Performance (mm)

(D \times D \times H)	25 \times 25 \times 4		
Ceramic Chip Diameter	24.8 \pm 0.2	Dceramic Chip Thickness	4.0 \pm 0.1
d	0.83 \pm 0.05	h	6.3 \pm 0.2

Product structure: feeding point eccentric 2.6mm



3 Operating and Storage Temperature

Operating Temperature	-40 $^{\circ}$ C \sim +80 $^{\circ}$ C
Storage Environment	Temperature: -10 $^{\circ}$ C \sim +40 $^{\circ}$ C、Humidity: \leq 75% , it must be used up within 6 months after the goods received, the time exposed to air \leq 12H