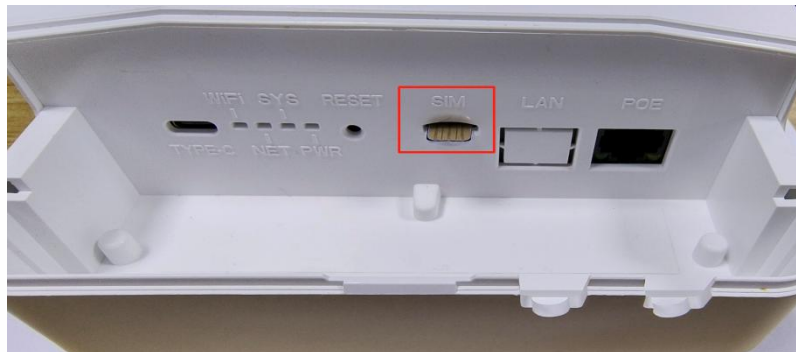


GOR300 Quickly Installation Guide

1. Six views

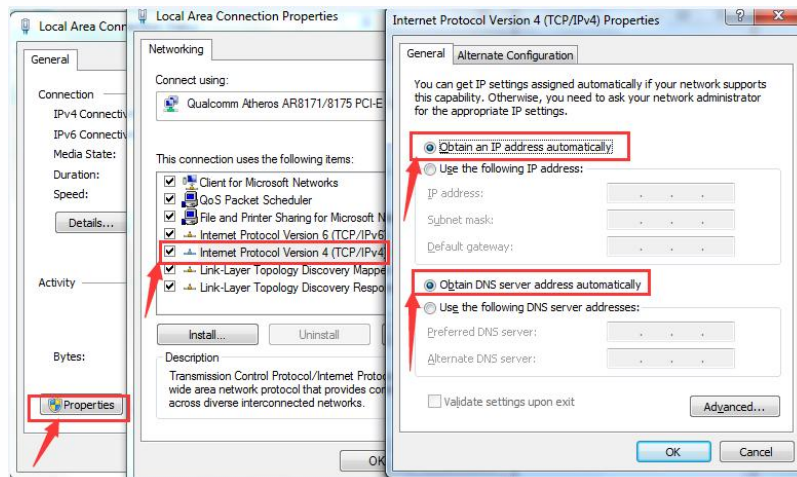


2. Nano SIM card slot. USB 2.0.

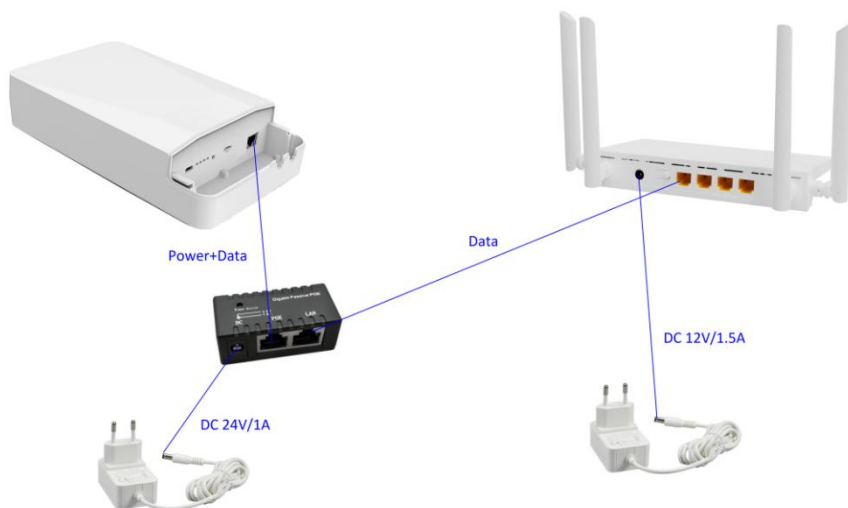


3. Quickly Config guide

1). The client network must be automatically obtained.



2) .Take out the device, insert the SIM card according to the instructions, and then use the matching power adapter(POE) to supply power to the devices.



3). The computer will automatically obtain an IP address. After the computer obtains the IP, enter the login IP address in the browser, and the system will automatically jump out of the login interface. After entering the user name and password, click the login button to log in to the router web UI.

Login address:

192.168.10.1

User login information:

User Name: root

You do not need to enter the password for the first login, please set the login password in time.

Authorization Required

Please enter your username and password.

Username

root

Password

LOGIN

RESET

4). Set your login password

System>>Administration>>Router Password. Enter your password and click Save.

The screenshot shows the 'Router Password' configuration page. On the left is a sidebar menu with options: Dashboard, Status, System, Administration (highlighted), Backup / Flash Firmware, Reboot, Network, Telephony, MTK, and Logout. The main content area is titled 'Router Password' and includes a description: 'Changes the administrator password for accessing the device'. There are two input fields labeled 'Password' and 'Confirmation', each with a toggle icon to the right. A 'SAVE' button is located at the bottom right of the form.

5). When the device is powered on, the system will start automatically. It takes 2 minutes to initialize. The browser will display the SIM card identification and the operator's network registration status.

Enter the page Dashboard>> Internet, you can view the obtained network IP address.

The screenshot shows the 'Internet' status page. At the top center is a green globe icon. Below it, the title 'Internet' is centered. The page is divided into two columns. The left column is titled 'IPv4 Internet' and shows the following information: **Connected:** yes, Connected since: 0h 35m 30s, Protocol: MIPC Cellular, IPv4: 10.168.56.43, GatewayV4: 10.168.56.44, and DNSv4: 120.196.165.7,221.179. The right column is titled 'IPv6 Internet' and shows: **Connected:** yes, Connected since: -, Protocol: MIPC Cellular, IPv6 prefix: 2409:8d5a:c90:12db::/6, GatewayV6: fe80::1, and DNSv6: 2409:8057:2000::8,240.

4. Precautions

- 1) When you remove and insert the SIM card, please ensure the device without power.
- 2) Make sure you place the router/access point in a centralized location within your network for the best performance.
- 3) Place home appliances such as cordless telephones, microwaves, and televisions as far away as possible from the router/access point. This would significantly reduce any interference that the appliances might cause since they operate on same frequency.
- 4) Don't let intruders connect to your wireless network. Encrypt your wireless network by turning on the WPA or WEP security feature on the router.